



GREEN SOLUTIONS

Smart . Simple . Sustainable

TECHNICAL SPECIFICATIONS

GARDEN SERIES / Garden + Gatepost Lights

1. SGL-1500 15 WATT / 1,500 LUMEN
2. SGL-3000 30 WATT / 3,000 LUMEN

CAMERA SERIES / Solar Powered IP Cameras

1. SC-4G-BALL BALL TYPE CAMERA
2. SC-4G-GUN GUN TYPE CAMERA

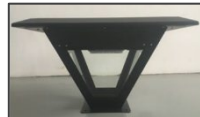
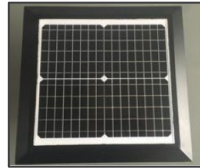
FOR FURTHER INFORMATION, PLEASE CONTACT: INFO@S3GREENSOLUTIONS.COM



GREEN SOLUTIONS

Smart . Simple . Sustainable

SOLAR GARDEN/GATEPOST LIGHT / TECHNICAL SPECIFICATIONS



SERIES GARDEN

RATING 15 WATT / 1,500 LUMEN

MODEL SGL-1500



Use the latest solar and LED technologies for exceptional lighting.

Benefit from energy savings, reduced maintenance cost and lower carbon emissions.

Ideal for lining pathways and accenting garden features.

SUNPOWER

SOLAR PANEL

POWER 18 VOLT, 20 WATT (PEAK)

LIFESPAN 25 YEARS

CONTROLLER

TYPE MPPT

RATING IP 68

SENSORS PASSIVE INFRARED MOTION SENSOR + PHOTOCCELL ACTIVATION

BATTERY

TYPE LITHIUM IRON PHOSPHATE

CAPACITY 12.8 VOLT, 13.2 AMP-HOUR

DISCHARGE DIM MODE: 80+ HOURS
BRIGHT MODE: 16+ HOURS

LIFESPAN 3,000+ CYCLES

LED LIGHT SOURCE

PHILIPS

- RATING** 15 WATT
- OUTPUT** 1,500-1,800 LUMEN, 5,000K WHITE
- LIFESPAN** 100,000 HOURS

MATERIALS & INSTALLATION

- HOUSING** POWDER COATED STEEL
- RATING** IP 66
- MOUNTING** 2-4m RECOMMENDED, POST TOP
- WARRANTY** 3 or 5 YEARS

DIMENSIONS

ITEM	LENGTH mm / inches	WIDTH mm / inches	HEIGHT mm / inches	NET WEIGHT kg / lbs
Light Body	400 / 15.7	400 / 15.7	300 / 11.8	9.5 / 20.9

PACKING INFORMATION

ITEM	PACKAGE	LENGTH mm / inches	WIDTH mm / inches	HEIGHT mm / inches	VOLUME m ³ / ft ³	GROSS WEIGHT kg / lbs
Carton	1 / carton	490 / 19.3	490 / 19.3	320 / 12.6	.077 / 2.64	11.0 / 24.3
830 per 40-foot HQ Container				350 per 20-foot Container		

CERTIFICATION



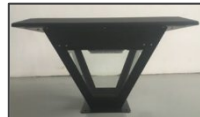
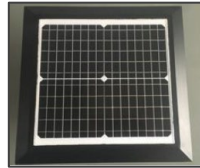
FOR FURTHER INFORMATION, PLEASE CONTACT: INFO@S3GREENSOLUTIONS.COM



GREEN SOLUTIONS

Smart . Simple . Sustainable

SOLAR GARDEN/GATEPOST LIGHT / TECHNICAL SPECIFICATIONS



SERIES GARDEN
RATING 30 WATT / 3,000 LUMEN
MODEL SGL-3000



Use the latest solar and LED technologies for exceptional lighting.

Benefit from energy savings, reduced maintenance cost and lower carbon emissions. Ideal for lining pathways and accenting garden features.

SUNPOWER

SOLAR PANEL

POWER 18 VOLT, 45 WATT (PEAK)
LIFESPAN 25 YEARS

CONTROLLER

TYPE MPPT
RATING IP 68
SENSORS PASSIVE INFRARED MOTION SENSOR + PHOTOCCELL ACTIVATION

BATTERY

TYPE LITHIUM IRON PHOSPHATE
CAPACITY 12.8 VOLT, 23.1 AMP-HOUR
DISCHARGE DIM MODE: 75+ HOURS
 BRIGHT MODE: 15+ HOURS
LIFESPAN 3,000+ CYCLES

LED LIGHT SOURCE

PHILIPS

RATING 30 WATT
OUTPUT 3,000-3,600 LUMEN, 5,000K WHITE
LIFESPAN 100,000 HOURS

MATERIALS & INSTALLATION

HOUSING POWDER COATED STEEL
RATING IP 66
MOUNTING 2-4m RECOMMENDED, POST TOP
WARRANTY 3 or 5 YEARS

DIMENSIONS

ITEM	LENGTH mm / inches	WIDTH mm / inches	HEIGHT mm / inches	NET WEIGHT kg / lbs
Light Body	630 / 24.8	630 / 24.8	330 / 13.0	16.4 / 36.2

PACKING INFORMATION

ITEM	PACKAGE	LENGTH mm / inches	WIDTH mm / inches	HEIGHT mm / inches	VOLUME m ³ / ft ³	GROSS WEIGHT kg / lbs
Carton	1 / carton	675 / 26.6	675 / 26.6	375 / 14.8	.171 / 5.87	25.4 / 56.0 <i>Incl. brackets</i>
380 per 40-foot HQ Container				160 per 20-foot Container		

CERTIFICATION



FOR FURTHER INFORMATION, PLEASE CONTACT: INFO@S3GREENSOLUTIONS.COM



GREEN SOLUTIONS

Smart . Simple . Sustainable

SOLAR IP CAMERA / TECHNICAL SPECIFICATIONS



SERIES CAMERA

TYPE BALL

MODEL SC-4G-BALL



Bring 24-hour surveillance to any location with solar powered IP cameras.

Full color, remote control, 360° rotation, digital zoom, and two-way audio.

FEATURES



4G NETWORK PLUG-AND-PLAY



H.264 DUAL STREAM VIDEO



ONLINE ROTATE AND ZOOM



FULL COLOR



REMOTE AUDIO



MOTION SENSOR



ONBOARD MICRO SD RECORDING



IP-66 WEATHERPROOF ENCLOSURE

CAMERA

SENSOR	1/3 CMOS
RESOLUTION	1920 x 1080 (300M EFFECTIVE PIXELS)
VIDEO	25 FPS (32 KBPS), H.264 COMPRESSION
DAY/NIGHT	AUTOMATIC INFRARED SWITCH
NETWORK	LTE (TDD/FDD),TD-SCDMA, EVDO

SOLAR PANEL

SUNPOWER	
POWER	18 VOLT, 50 WATT (PEAK)
LIFESPAN	25 YEARS

BATTERY

TYPE	LITHIUM IRON PHOSPHATE
CAPACITY	12.8 VOLT, 24 AMP-HOUR
CHARGE	6 HOURS TO FULL CHARGE
AUTONOMY	100+ HOURS (STANDBY MODE)
LIFESPAN	3,000+ CYCLES

CERTIFICATION



FOR FURTHER INFORMATION, PLEASE CONTACT: INFO@S3GREENSOLUTIONS.COM



GREEN SOLUTIONS

Smart . Simple . Sustainable

SOLAR IP CAMERA / TECHNICAL SPECIFICATIONS



SERIES CAMERA

TYPE GUN

MODEL SC-4G-GUN



Bring 24-hour surveillance to any location with solar powered IP cameras.

Full color, remote control, 360° rotation, digital zoom, and two-way audio.

FEATURES



4G NETWORK + 4 ANTENNAS



H.264 DUAL STREAM VIDEO



ONLINE ROTATE AND ZOOM



FULL COLOR



REMOTE AUDIO



MOTION SENSOR



ONBOARD MICRO SD RECORDING



IP-66 WEATHERPROOF ENCLOSURE

CAMERA

SENSOR	1/3 CMOS
RESOLUTION	1920 x 1080 (300M EFFECTIVE PIXELS)
VIDEO	25 FPS (32 KBPS), H.264 COMPRESSION
DAY/NIGHT	AUTOMATIC INFRARED SWITCH
NETWORK	LTE (TDD/FDD),TD-SCDMA, EVDO

SOLAR PANEL

SUNPOWER	
POWER	18 VOLT, 50 WATT (PEAK)
LIFESPAN	25 YEARS

BATTERY

TYPE	LITHIUM IRON PHOSPHATE
CAPACITY	12.8 VOLT, 24 AMP-HOUR
CHARGE	6 HOURS TO FULL CHARGE
AUTONOMY	100+ HOURS (STANDBY MODE)
LIFESPAN	3,000+ CYCLES

CERTIFICATION



FOR FURTHER INFORMATION, PLEASE CONTACT: INFO@S3GREENSOLUTIONS.COM